

# itl<sup>®</sup> EUROSOFT WP

The Eurosoft WP (Wide Profile) pneumatic shaped solid tire is engineered to deliver superior performance and long tread life characteristics.

- 3-Stage construction with a concave sidewall design ensures a longer service life and cooler running pneumatic shaped solid tire while providing a soft ride.
- High Torque Steel Reinforced Rings in the bead area ensures no slipping on the wheel.
- WP (Wide Profile) tread surface enhances stability and increases footprint for greater traction and load distribution.



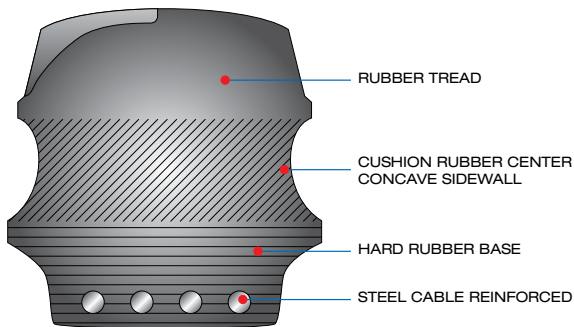
| Size             | R.W.<br>(in) | O.D.<br>(in) | T.W.<br>(in) | LCC<br>(lb)6mph | Wt.<br>(lb) |
|------------------|--------------|--------------|--------------|-----------------|-------------|
| 15x4-1/2-8 *     | 3.00         | 14.8         | 4.5          | 1,975           | 21          |
| 16x6-8 4.33 *    | 4.33         | 16.1         | 5.8          | 3,290           | 36          |
| 200/50-10 *      | 6.50         | 17.8         | 7.8          | 5,220           | 56          |
| 18x7-8           | 4.33         | 18.0         | 5.7          | 4,010           | 47          |
| 500x8 *          | 3.00         | 18.0         | 4.5          | 2,670           | 38          |
| 600x9            | 4.00         | 20.7         | 5.5          | 4,230           | 58          |
| 650x10           | 5.00         | 22.8         | 6.2          | 5,810           | 82          |
| 23x9-10 *        | 6.50         | 23.1         | 8.2          | 7,525           | 108         |
| 23x10-12 *       | 8.00         | 23.1         | 9.4          | 8,820           | 110         |
| 700x12           | 5.00         | 25.8         | 6.5          | 6,640           | 109         |
| 250x15           | 7.00         | 28.5         | 8.9          | 9,615           | 158         |
| 700x15           | 5.50         | 28.8         | 7.0          | 7,905           | 140         |
| 28x9-15 (815x15) | 7.00         | 27.5         | 9.0          | 9,000           | 153         |
| 825x15           | 6.50         | 32.2         | 8.0          | 10,875          | 210         |
| 1000x20          | 8.00         | 40.9         | 10.4         | 17,015          | 412         |
| 1200x20          | 8.50         | 42.9         | 11.1         | 19,770          | 492         |

\* Indicates tire is also available in the Halo design.

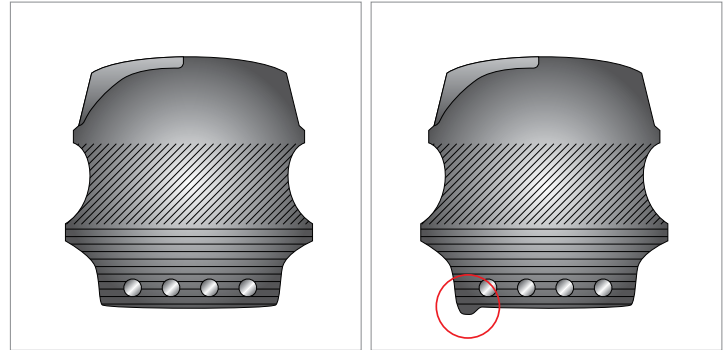
ASTM TEST

|                         | TREAD | CENTER | BASE |
|-------------------------|-------|--------|------|
| TENSILE STRENGTH P.S.I. | 3500  | 3300   | 1800 |
| 300% MODULUS P.S.I.     | 2000  | 2300   | -    |
| ELONGATION%             | 450   | 400    | 300  |
| HARDNESS SHORE A        | 65    | 65     | 85   |
| BAYSHORE RESILIENCE%    | 50    | 55     | 30   |
| TEAR DIE.C P.L.I.       | 375   | 230    | 200  |

CONSTRUCTION



AVAILABLE IN "HALO" / "CLIP" CONSTRUCTION

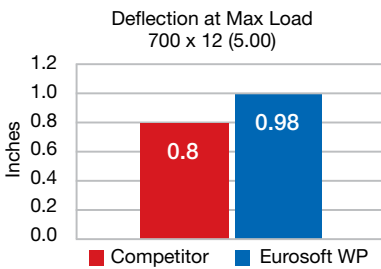


STANDARD DESIGN

HALO DESIGN



HIGH SHOCK ABSORPTION



SUPERIOR TRACTION

